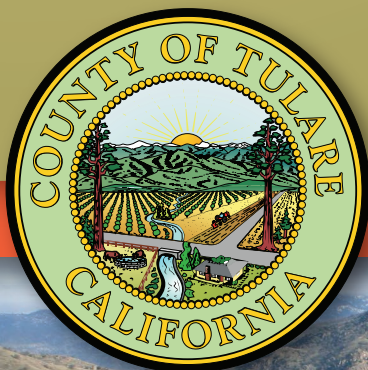


Water Infrastructure/ Drought Relief

The California Department of Water Resources reports that "calendar year 2013 closed as the driest year in recorded history for many areas of California, and current conditions suggest no change in sight for 2014." The April 1 snowpack survey measured snowpack at 32 percent of the average April 1 measurement. Water customers of the State Water Project and the Central Valley Project have been issued a zero allocation and long time water rights holders in the Sacramento Valley may be cut 50 percent. The zero allocation is the first in the 54 year history of the State Water Project and highlights the need for increased storage capacity to manage fluctuating weather conditions and address the needs of a larger population of water users.



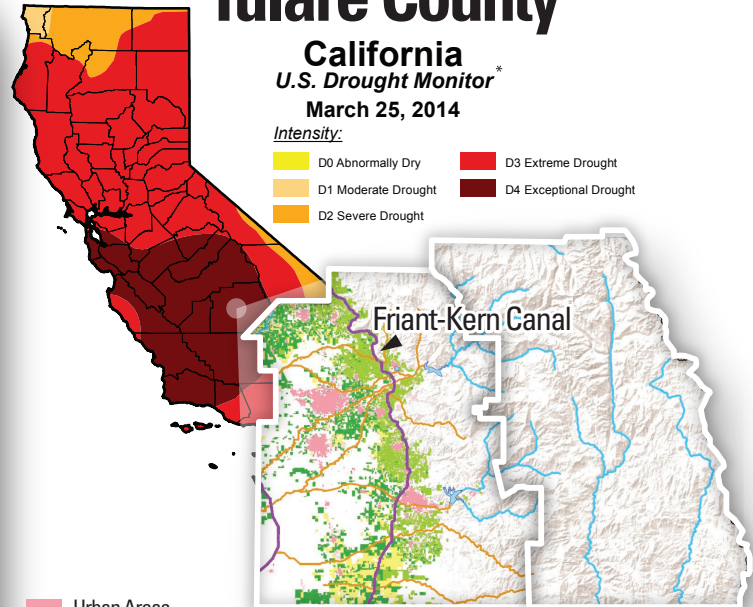
Tulare County

California
U.S. Drought Monitor*
March 25, 2014

Intensity:

D0 Abnormally Dry
D1 Moderate Drought
D2 Severe Drought

D3 Extreme Drought
D4 Exceptional Drought



Urban Areas
Permanent Rivers
Seasonal Rivers - dry this year
Trees (nuts and fruits)
Citrus
Vineyards

361,471 acres
of permanent crops

Request:

- ① Appropriations for water storage with an emphasis on surface storage and continuing appropriations to fund the necessary feasibility, environmental, and design pre-construction activities.
- ② Emergency drought relief in the form of grants to replace permanent crops which will be lost this year due to the lack of water.

Contact Information:

Jean M. Rousseau/County Administrative Officer
(559) 636-5005
jrousseau@co.tulare.ca.us

David Wetmore/Carpi Clay & Smith
(202) 822-8300
dwetmore@carpiclay.com

*The Drought Monitor focuses on broad-scale conditions. Local conditions may vary. See accompanying text summary for forecast statements.
Author: David Simeral • Western Regional Climate Center



Reservoir Conditions

Ending At Midnight - April 2, 2014

CURRENT RESERVOIR CONDITIONS

